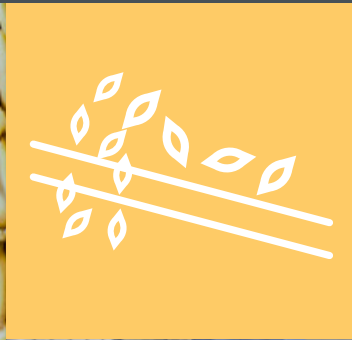
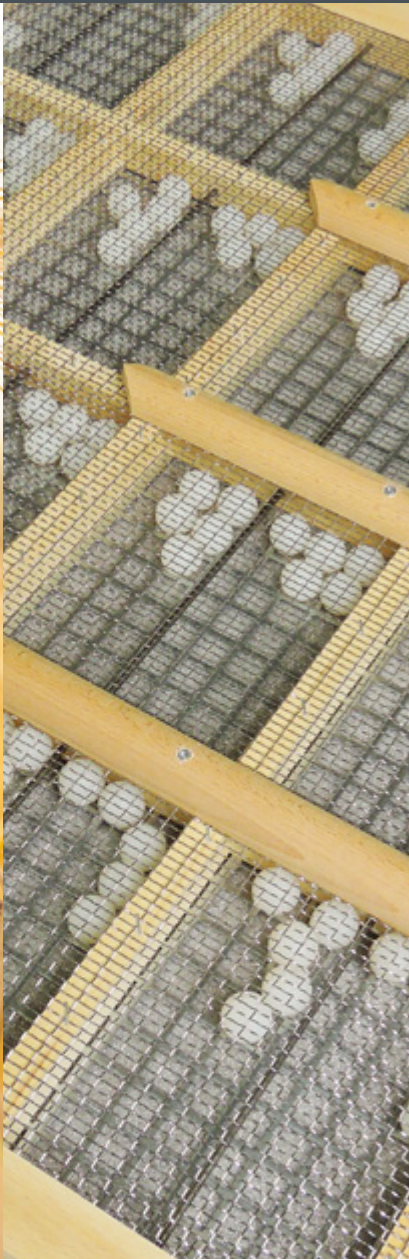




PCInet



DESIGN | INSTALLATION | SERVICE

SEED PRODUCTION



01

SIEVE CLEANERS

02

MODULAR SIEVE CLEANERS

03

TRIER BATTERIES

04

GRAVITY TABLES

05

SILOS ADAPTED TO SEED FACILITIES

06

SQUARE SILOS

07

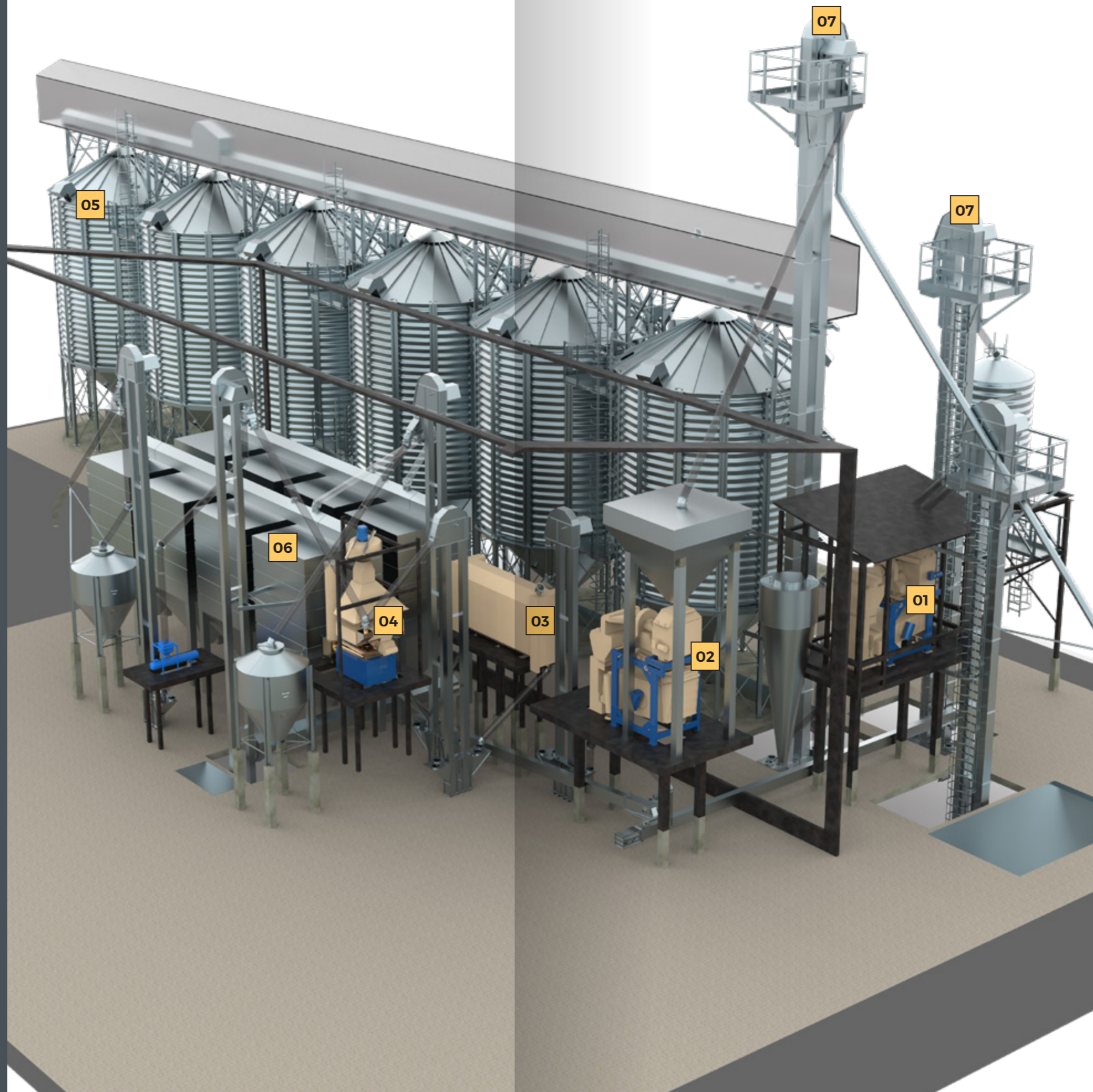
TRANSPORT DEVICES WITH SOLUTIONS FOR SEED FACILITIES

08

OUR PROJECTS

09

FACTS



01



SIEVE CLEANERS

02



MODULAR SIEVE CLEANERS

03



TRIER BATTERIES

04



GRAVITY TABLES

05



CIRCULAR FUNNEL SILOS

06

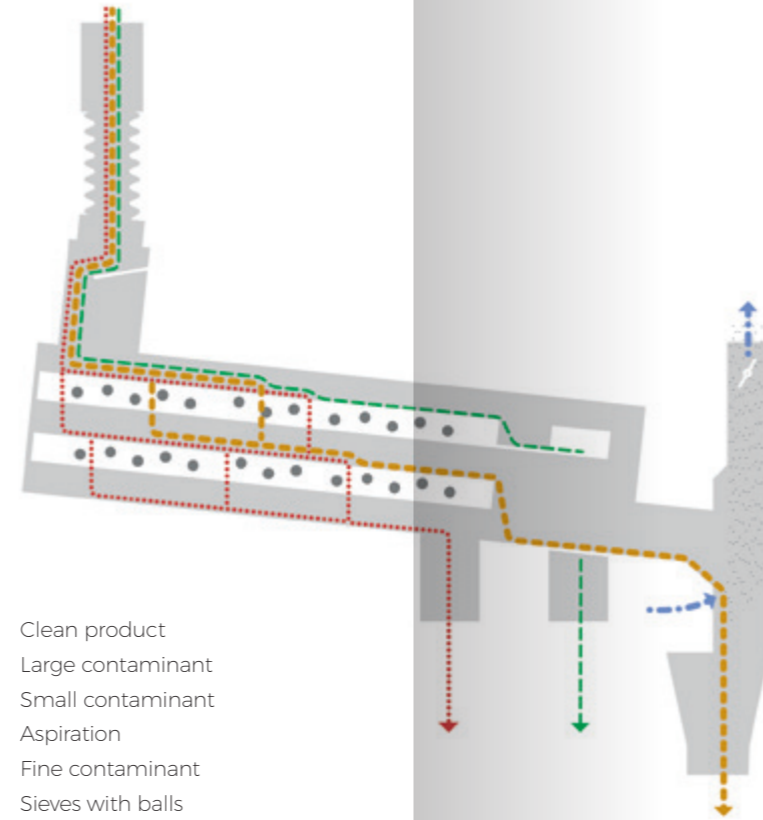


SQUARE SILOS

07



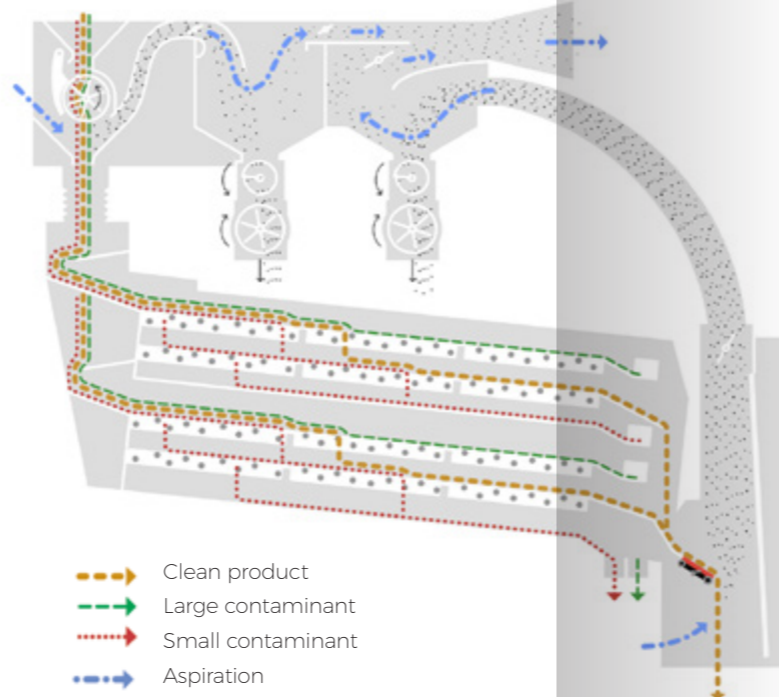
TRANSPORT DEVICES



- Clean product
- Large contaminant
- Small contaminant
- Aspiration
- Fine contaminant
- Sieves with balls

- | Intended for preliminary cleaning, primary cleaning, cleaning of all seeds and production of seed material.
- | High efficiency with small dimensions
- | Easy installation, startup and operation
- | Low power consumption

JCC			03	05	08
Efficiency	Preliminary cleaning	t/h	1,5	6	15
	Industrial cleaning	t/h	1	4	10
	Thorough cleaning	t/h	0,5	2	5
Sieve area		m ²	0,3	0,8	1,9
Energy consumption		kW	0,4	0,4	0,7
Ventilator energy consumption		kW	1,1	1,5	1,9
Weight (without ventilator)		kg	140	220	350

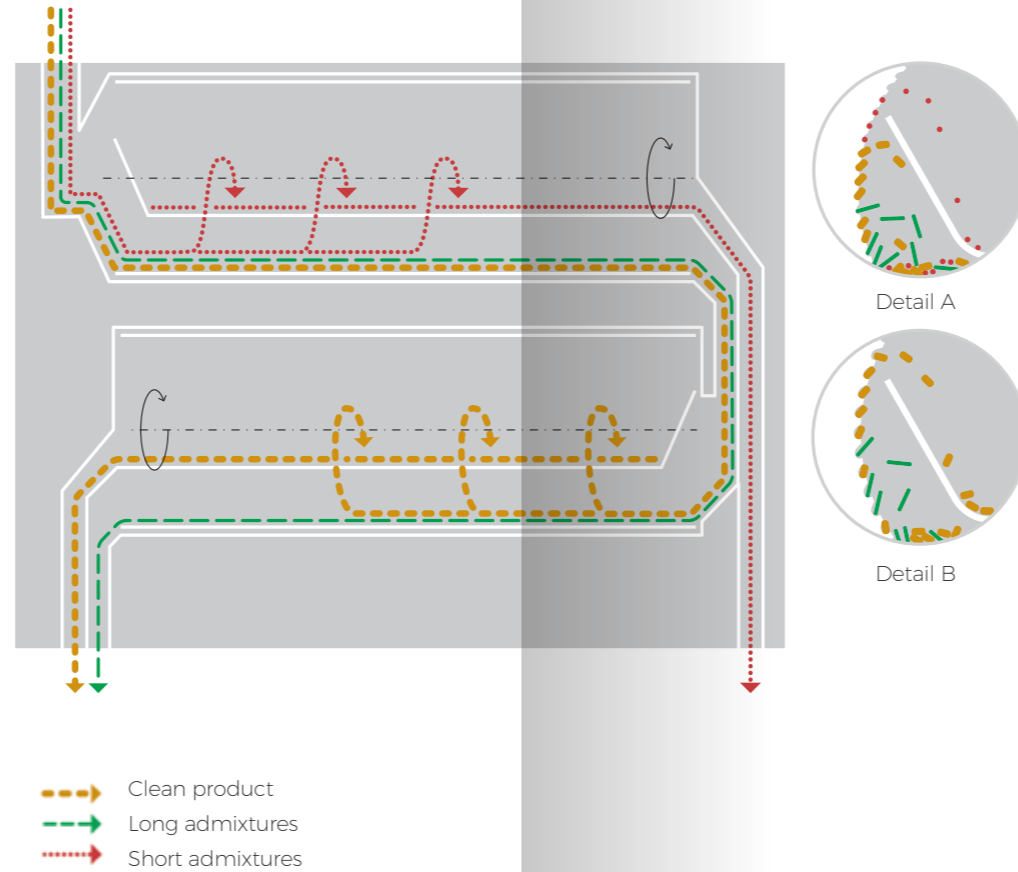


- Clean product
- Large contaminant
- Small contaminant
- Aspiration
- Fine contaminant
- Sieves with balls
- Magnet

- | Intended for preliminary cleaning, primary cleaning, cleaning of all seeds and production of seed material.
- | Modular construction
- | High effectiveness of cleaning
- | Above standard efficiency with small dimensions

EFFICIENCY PARAMETERS

UNIVERSAL MACHINES			JCM	08122	10122	10123	10222	10223	15223	10133	15413
Efficiency	Number of sieve rows in the cabinet			2	2	2	2	2	2	3	1
	Preliminary cleaning	t/g		25	60	60	100	100	200	-	400
	Industrial cleaning	t/g		12	25	40	50	80	90	40	-
	Thorough cleaning	t/g		6	12	18	24	36	45	18	60
Sieve area		m ²		1,9	3,4	5,1	6,8	10,2	12,6	7,65	12,6



- | Designed for separating admixtures and contamination from seeds of varying shapes and lengths | Simple adjustment and adaptation to different varieties of seeds
- | High efficiency with small dimensions
- | Easy installation, startup and operation
- | Sturdy construction and high operating reliability

Cylinder diameter: 400-700 mm
Cylinder length: 1000-4000 mm

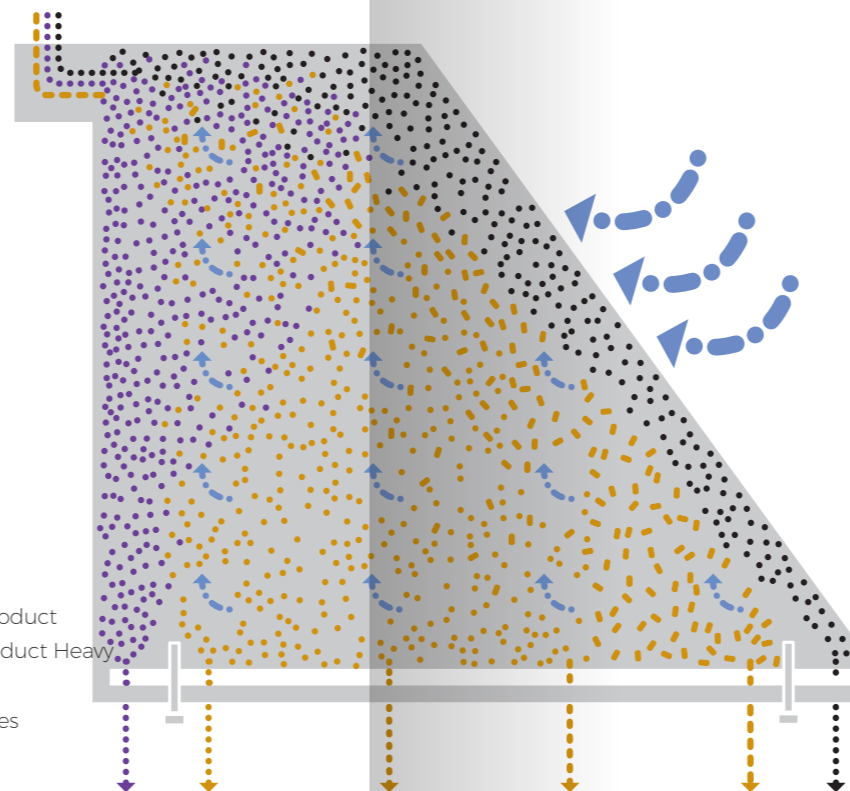
Efficiency: 1-16 t/h

Functions:

- R – separation of short and round admixtures (seed halves)
- L – separation of long admixtures
- RL – simultaneous separation of short/round and long admixtures

Other variants:

- | 2-cylinder, 3-cylinder



- | Intended for final cleaning of all grains and seed material.
- | Precise and delicate sorting according to specific weight.
- | Simple and precise adjustment, low energy consumption.

JGT		12	23	
Efficiency	Wheat	t/h	1,5	6
	Barley	t/h	1	4
	Oat	t/h	0,5	2
	Clover	t/h	0,5	2
	Grass	t/h	0,5	2
Table area	Fine seeds	t/h	0,5	2
		m ²	0,3	0,8
Energy consumption		kW	0,4	0,4
Ventilator energy consumption		kW	1,1	1,5
Wymiary	Length	mm	1170	1530
	Width	mm	720	920
	Height	mm	1750	1300
Weight		kg	140	220



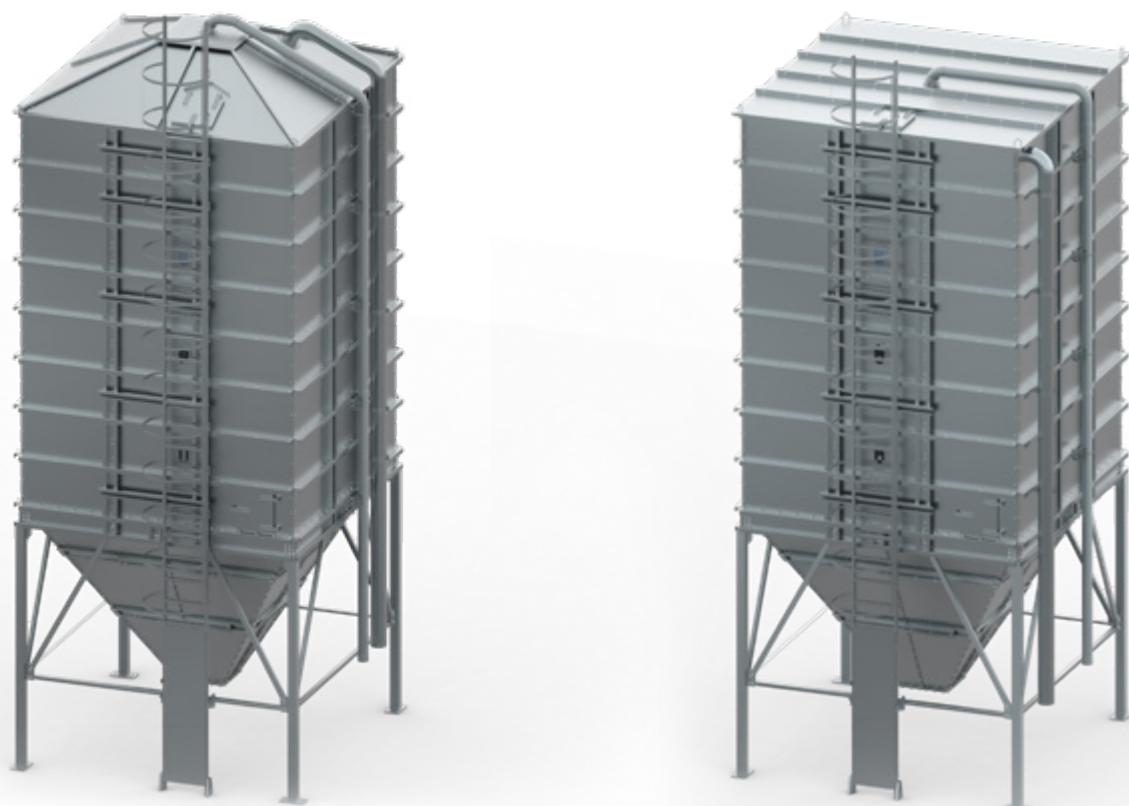
FUNNEL SILOS

- | The main advantage of this type of silo is quick silo unloading.
- | We offer silos with capacities from 27 to 1055 ton.
- | Made from CORRUGATED structural steel with 350 g/m² zinc coating.
- | Used for long-term seed storage, as well as buffer silos at drying and cleaning facilities.
- | Funnel at a 45 degree angle allowing for quick and effortless silo unloading.
- | Appropriate corrugation angle prevents seed deposits on walls; the aeration system installed as standard allows to maintain seeds in good condition.
- | Use of corrugated sheets in the containers' cylindrical section causes refraction of sun rays, preventing excessive heating of materials stored during the summer period; they are installed in a brick configuration in order to extend the silo's usability period.



SMOOTH LOADING SYSTEM - A GRAIN

Decelerator which reduces seed damage during silo loading



SQUARE SILOS

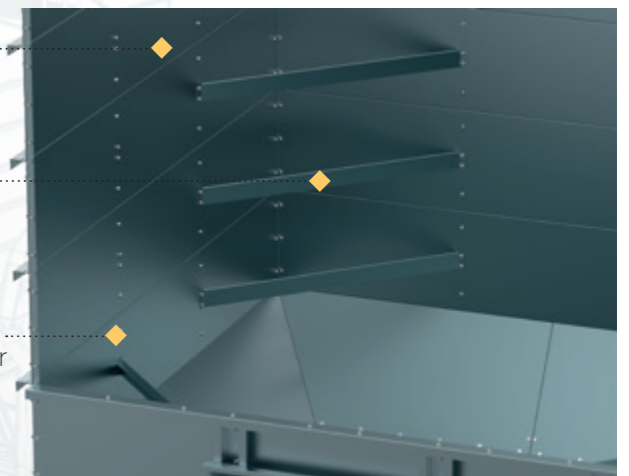
Square silos are intended for storage of loose materials. Their modular construction ensures possibility of silo expansion (increased height).

- | Silos made from sheet metal with a strength of 350 MPa and zinc coating with a thickness of 350 g/m² of surface.
- | Large silo legs made from heavy, zinc coated steelwork profiles.
- | High level of element interlocking and container tightness.
- | Smooth inner walls - without edges holding the grains.
- | Screws with round heads on the interior of the silo container.
- | Modular construction with the ability of expansion - height increase.
- | Easy assembly.

Smooth inner walls

Corner column stays bent upwards

Screws with round heads on the interior of the silo





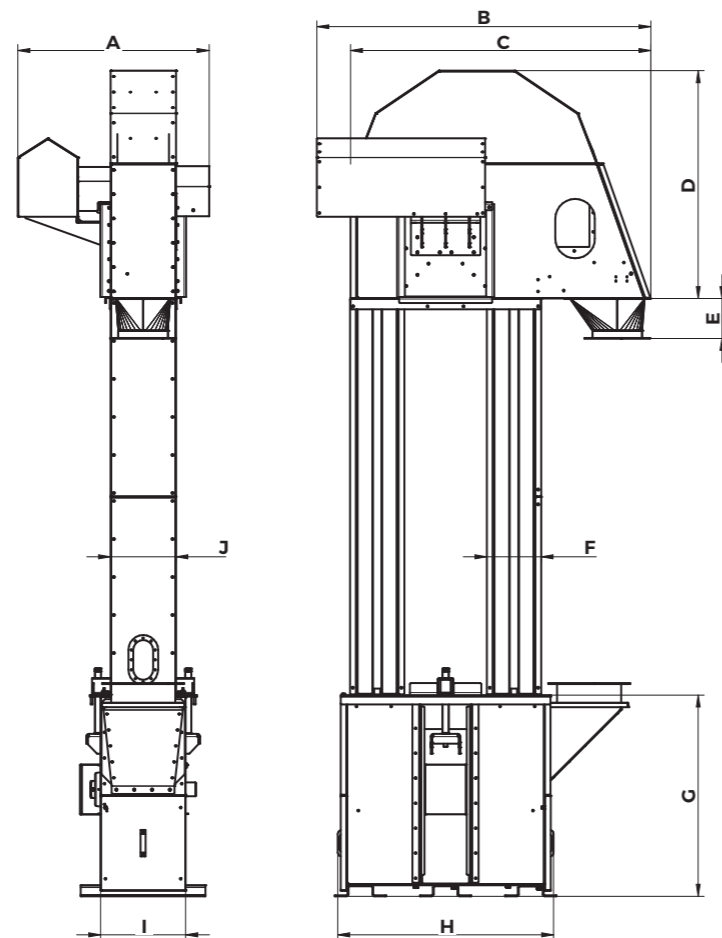
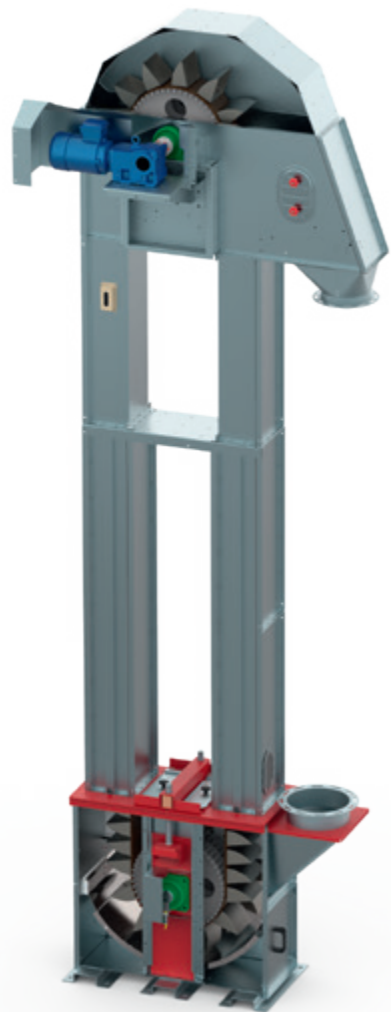
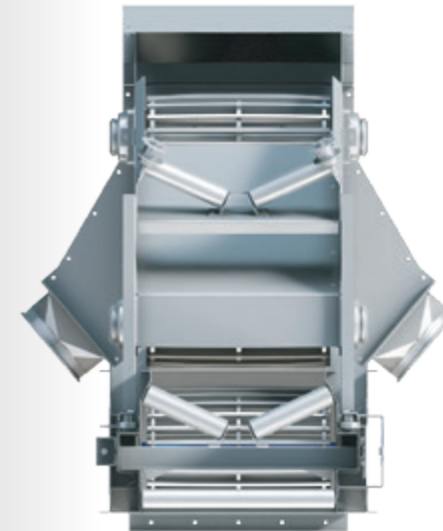
BUCKET ELEVATOR

- Intended for vertical transport of all varieties of grains, seeds and granulate, and other loose materials with a maximum diameter of 16 mm and maximum humidity of 25%, it is used for transporting materials with high efficiency - up to 200 m³/h
- Made entirely from zinc coated structural steel.
- Wheel with rod ribbing
- Self-cleaning foot equipped with a moving bottom
- Name brand, easy to maintain bearings
- The entire elevator structure is assembled using zinc coated screws with a hardness of 8.8
- NORD reduction motor encased in a housing on the head, which protects it against atmospheric conditions



BELT CONVEYORS

- Used to transport loose materials, recommended for horizontal transport of seed material
- Ensures smooth transport of materials without the effects of friction and seed crumbling.
- Ability of fitting the device with an unloading cart which ensures product unloading of the product at any point of the conveyor.
- 100% self-cleaning device.
- Low energy consumption.



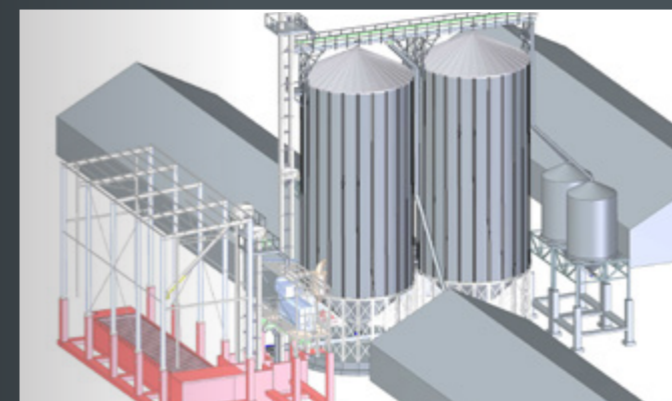
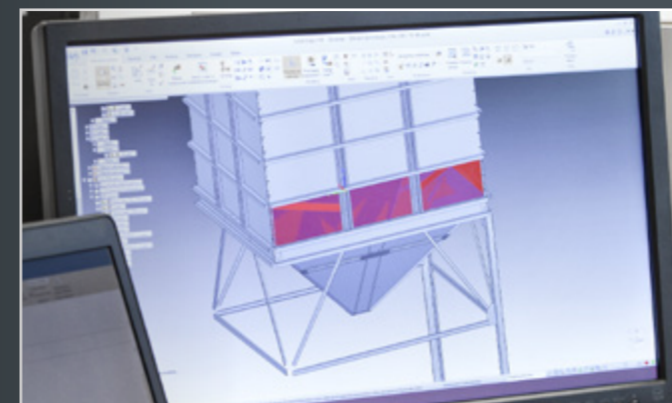




- | One of the largest private companies in the Polish agricultural business
- | Headquarters in Tarnowo Podgórne, 20 km from Poznań, at the territory of the an industrial park
- | State-of-the-art Production Plant in Zalesie Wielkie, 90 km from Poznań
- | Design, manufacture and sale of high quality products in the agricultural segment
- | Branches in 2 countries (Austria and Belgium)
- | Export constituting an approx. 50% share of revenue
- | Sales network encompassing not only countries of the EU, but also Africa, Mexico, Ukraine and Belarus
- | Innovative machine park allowing for expansive company development
- | Use of state-of-the-art technologies allows us to satisfy the Customer's individual requirements | Comprehensive investment handing



INSTRUCTIONS | TECHNICAL DOCUMENTATION | INSTRUCTION VIDEOS





POLNET Sp. z o.o.
i Wspólnicy
Spółka Komandytowa

ul. Sowia 13 B
62-080 Tarnowo Podgórne, Polska
tel.: + 48 61 657 67 00
fax: + 48 61 657 67 67
office@polnet.pl

Dział - nasiennictwo
tel. + 48 532 415 848

www.polnet.pl



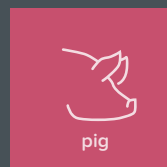
silo



feed mills



Seed production



pig



poultry



vet

